

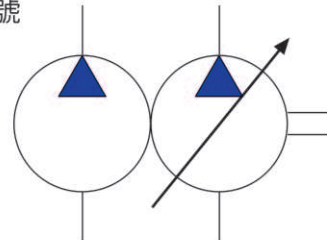


Combination Pump Vane + Gear

組合泵 變量葉片泵+外嚙合齒輪泵



油壓記號



SYMBOL

型式號碼/MODEL CODE

VCM-SF-30-A/EGA-4.3

齒輪泵排量
齒輪泵系列號碼

Displacement of gear pump
Gear pump series No.

壓力
A:20 kgf/cm²
B:35 kgf/cm²

Pressure ranges
C:55 kgf/cm²
D:70 kgf/cm²

葉片泵排量
30L,40L

Displacement of vane pump at 1800rpm
30L,40L

系列號碼:
葉片泵系列

Series No.
Vane pump series

產品特性:

1. 結合高低壓泵的特性，具備高低壓力並用的功能。
2. 變量葉片泵省能源、低噪音平穩的特性，搭配齒輪泵高效能的性能，是工程師在系統設計時優良的選擇。
3. 節省體積、縮小機械空間、節省能源。
4. 性能優異的齒輪泵可作為高壓泵或系統冷卻之用。
5. 標準法蘭安裝及維護容易。
6. 性能參數請參考相關之各別油泵。

Feature:

1. Combine the characteristics of both high and low pressure pumps, applicable to for high-low pressure system.
2. Power saving, low noise and smooth operation. Best choice for hydraulic system design for engineer.
3. Compactness, minimize space and energy saving.
4. Excellent performance gear pump could be used as a high pressure source or use as cooling system.
5. SAE standard flange.
6. Please refer to the table of single pump for performance figure.



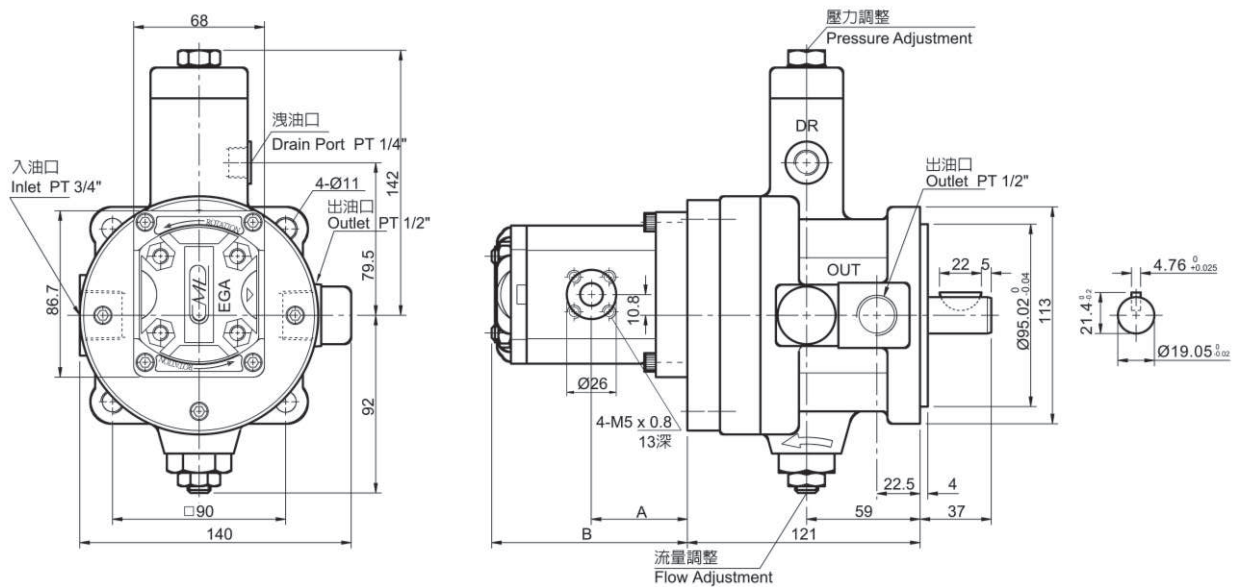
Combination Pump Vane + Gear

組合泵 變量葉片泵+外嚙合齒輪泵

技術資料/TECHNICAL DATA

| 型式 MODEL | 輪葉泵 VANE PUMP | | 容許回轉速 SHAFT SPEED RANGE (rpm) | | 重量 WEIGHT (kg) |
|--------------|---|--|-------------------------------------|------|-------------------------|
| | 泵排量 THEORETICAL DISPLACEMENT (c.c./rev.) | 最高壓力 MAX. PRESSURE (kgf/cm ²) | 最高 | 最低 | |
| | | | MAX. | MIN. | |
| SF-30A/EGA-* | 16.7 | 20 | 1800 | 800 | 10.4kgs +EGA pump |
| SF-30B/EGA-* | | 35 | 1800 | 800 | |
| SF-30C/EGA-* | | 55 | 1800 | 800 | |
| SF-30D/EGA-* | | 70 | 1800 | 800 | |
| SF-40A/EGA-* | 22.2 | 20 | 1800 | 800 | |
| SF-40B/EGA-* | | 35 | 1800 | 800 | |
| SF-40C/EGA-* | | 55 | 1800 | 800 | |
| SF-40D/EGA-* | | 70 | 1800 | 800 | |

尺寸圖/DIMENSION



| 齒輪泵 EGA SERIES | | 1.2 c.c. | 1.7 c.c. | 2.2 c.c. | 2.6 c.c. | 3.2 c.c. | 3.8 c.c. | 4.3 c.c. | 6.2 c.c. | 7.8 c.c. |
|---------------------------|------------|---|----------|----------|----------|----------|----------|----------|----------|----------|
| 最高壓力 MAX.PRESSURE | | 建議使用 Suggested Pressure : 190 kgf/cm ² | | | | | | | | |
| 尺寸 DIMENSION (mm) | A | 37.8 | 38.5 | 39.5 | 40.5 | 41.5 | 42.5 | 43.5 | 47 | 50 |
| | B | 75.5 | 77 | 79 | 81 | 83 | 85 | 87 | 94 | 100 |
| 出入口尺寸 IN/OUT DIMENSION | INLET 入油口 | 10 | 10 | 10 | 10 | 12 | 12 | 12 | 12 | 12 |
| | OUTLET 出油口 | 10 | 10 | 10 | 10 | 12 | 12 | 12 | 12 | 12 |
| 重量 WEIGHT (kg) | | 1.0 | 1.0 | 1.0 | 1.1 | 1.1 | 1.2 | 1.2 | 1.3 | 1.4 |