

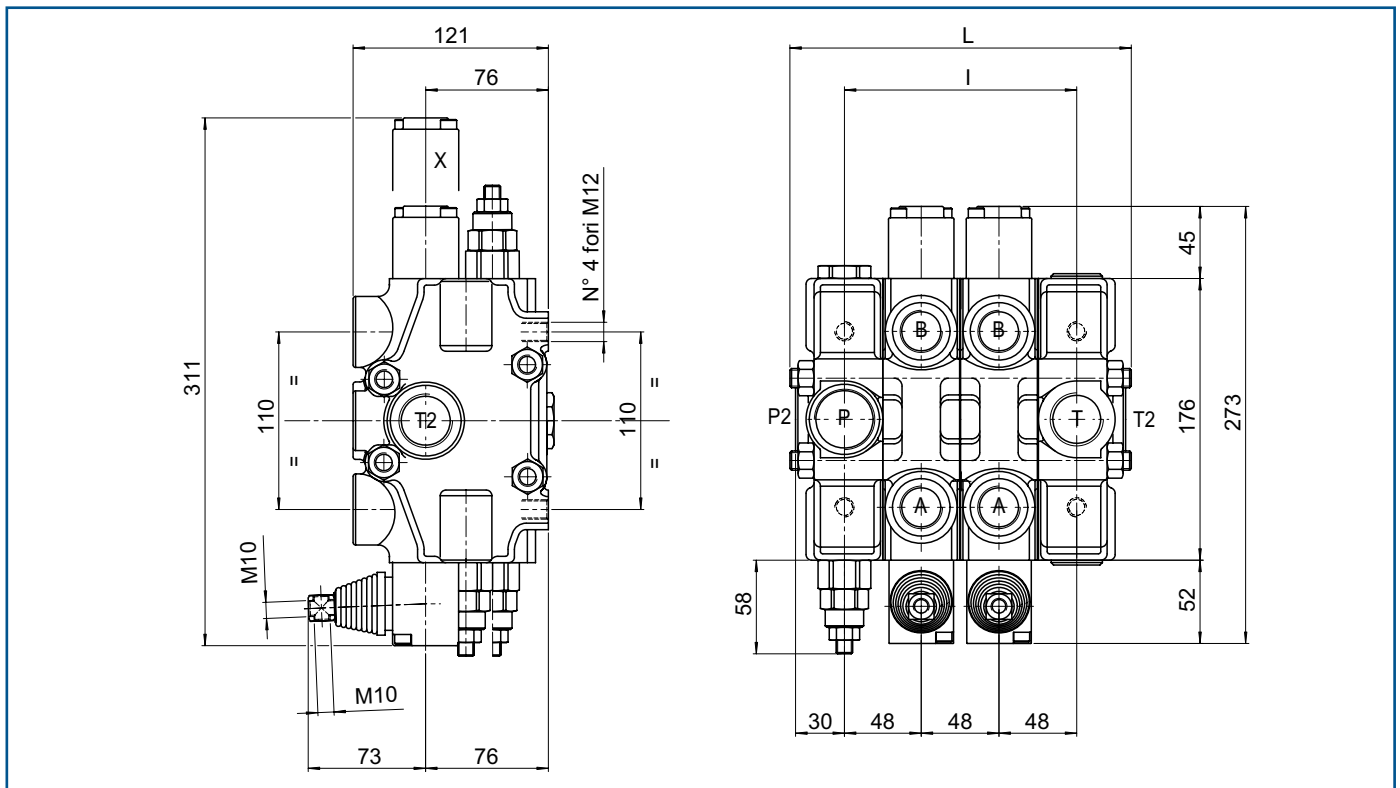
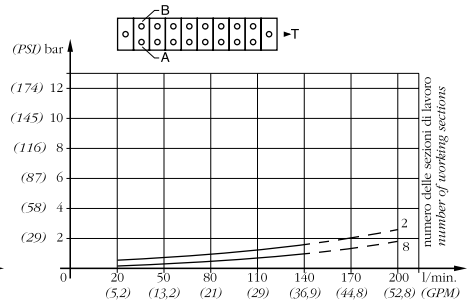
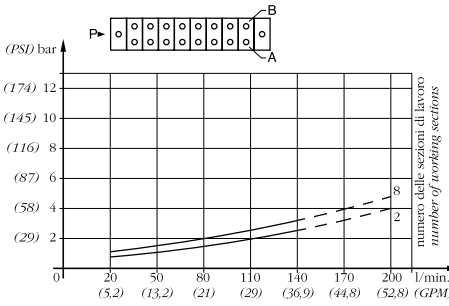
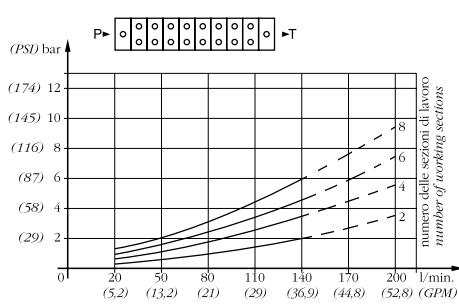
Caratteristiche generali / Technical characteristics		
	l/min	GPM
• Portata nominale / Nominal flow	140	37
• Portata limite / Max flow	180	48
	bar	PSI
• Pressione nominale / Nominal pressure	220	3200
• Pressione max sugli utilizzi / Max pressure on ports	300	4400
• Contropressione max allo scarico / Max pressure in tank-line	40	550



P-T - TEMPERATURA OLIO 50°C - VISCOSITÀ 3,5°E

P-A/B - TEMPERATURA OLIO 50°C - VISCOSITÀ 3,5°E

A/B-T - TEMPERATURA OLIO 50°C - VISCOSITÀ 3,5°E

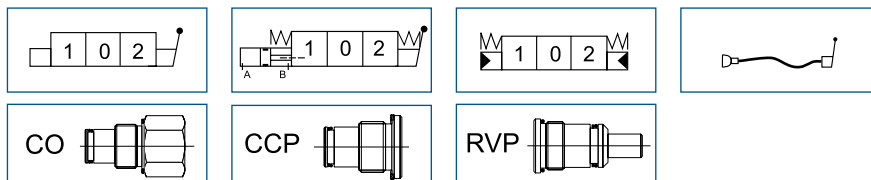


MOD	L	I	Kg
BC150/1	165	96	
BC150/2	213	144	
BC150/3	261	192	
...	

FILETTATURA STANDARD - STANDARD THREADS

COD	A-B	P	T	P2	T2
G	3/4"	1"	1"	1"	1"
F	1.1/16" - 12	1.5/16" - 12	1.5/16" - 12	1.5/16" - 12	1.5/16" - 12

◀ Su richiesta filettature diverse
Other threads available on request

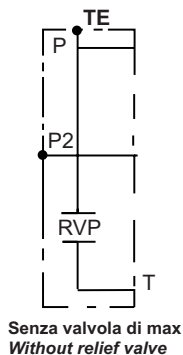
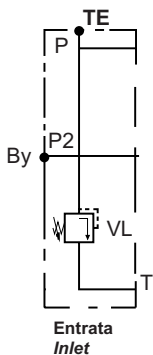


BCI50

BCI50



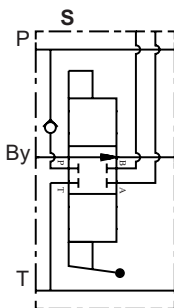
4,6 kg



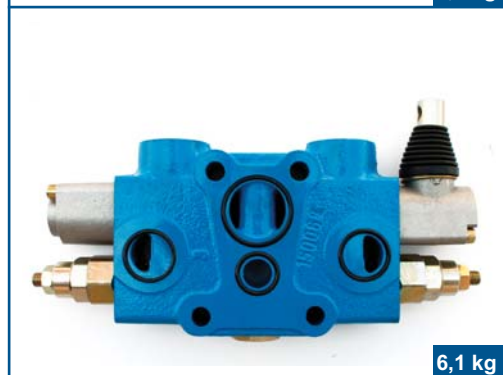
Testata d'entrata
Inlet



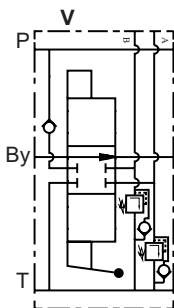
5,5 kg



Elemento standard
Standard element



6,1 kg

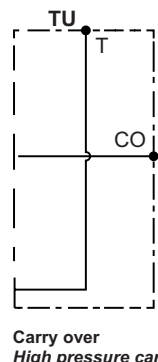
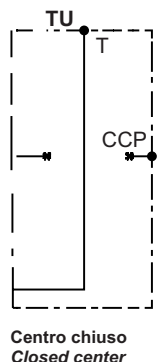
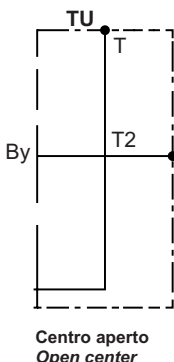


Elemento per valvole ausiliarie
Element for auxiliary valves

- L = Limitatrice di pressione
L = Relief valve
- C = Anticavitazione
C = Anti cavitation
- LC = Limitatrice anticavitazione
LC = Combined



4,3 kg



Testata d'uscita
Outlet